

COMMUNE DE FONTAN
PLAN D'OCCUPATION DES SOLS

ÉTUDE GÉOLOGIQUE
ET GÉOTECHNIQUE

Dossier. GS.1. 79129

Date. Septembre 79

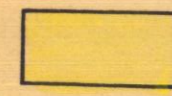




Pièce n°

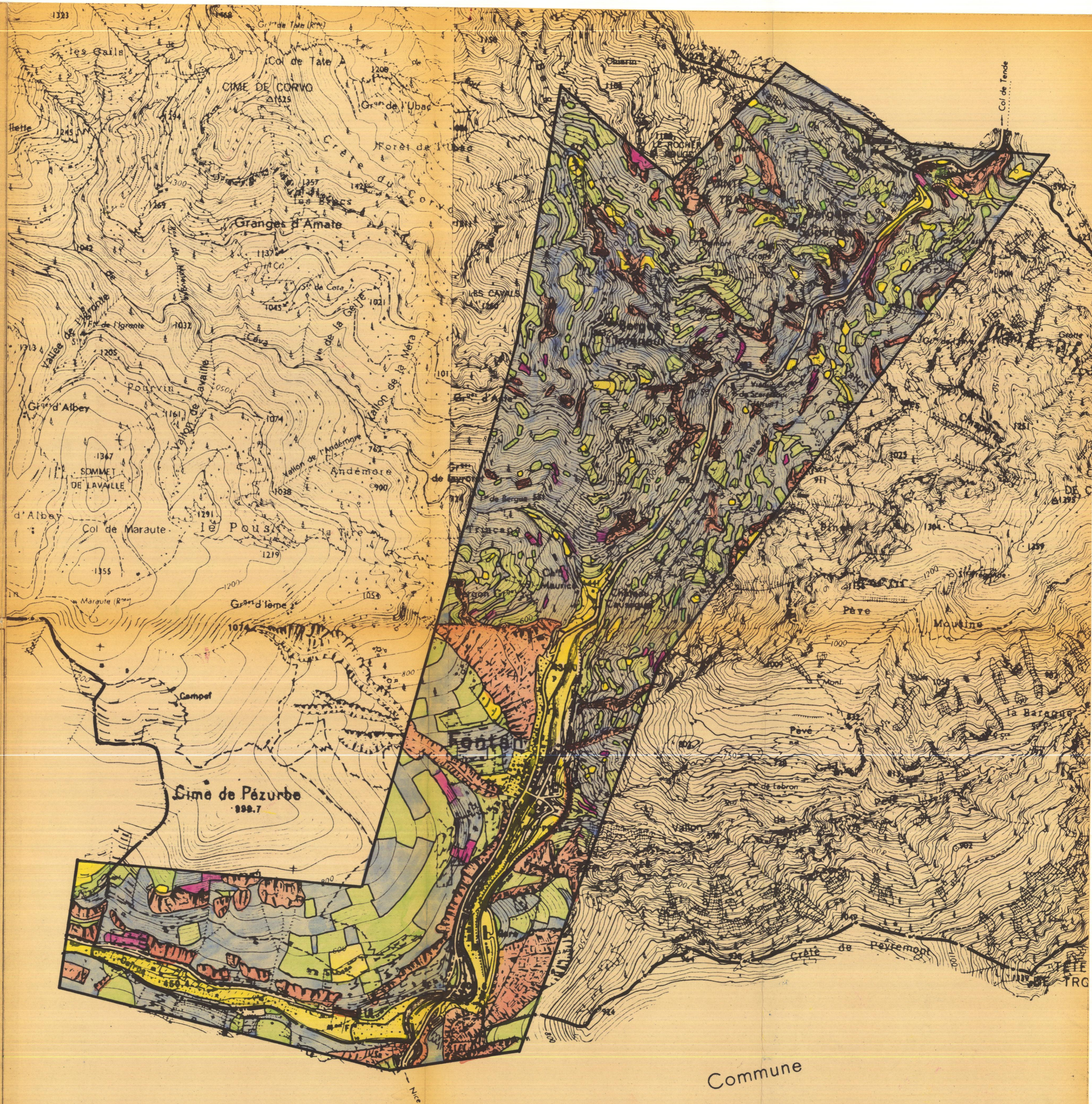
4

CARTE DES PENTES

Echelle. 1/10.000

LEGENDE

-  Pente < à 20°
-  Pente comprise entre 20 et 30°
-  Pente comprise entre 30 à 45°
-  Pente comprise entre 45 et 60°
-  Pente > 60°



Commune